

Gallery Specifications

The Gallery



EAST



removable

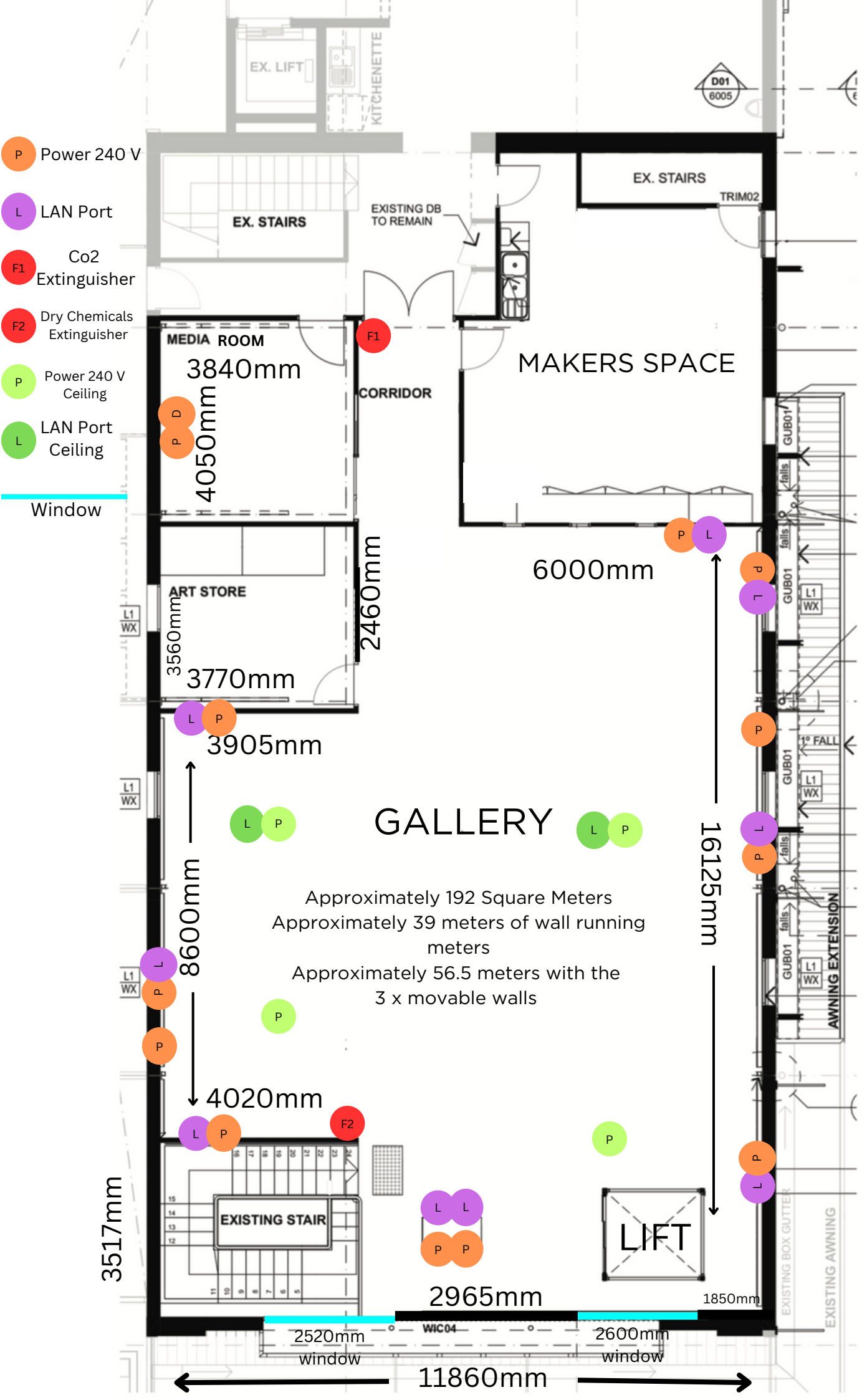
WEST



Approximately 192 Square Meters
Approximately 39 meters of wall
running meters
Approximately 56.5 meters with the
3 x movable walls installed

- Power 240 V
- LAN Port
- Co2 Extinguisher
- Dry Chemicals Extinguisher
- Power 240 V Ceiling
- LAN Port Ceiling

▬ Window



Approximately 192 Square Meters
 Approximately 39 meters of wall running meters
 Approximately 56.5 meters with the 3 x movable walls

3517mm

11860mm

16125mm

8600mm

4020mm

3905mm

4050mm

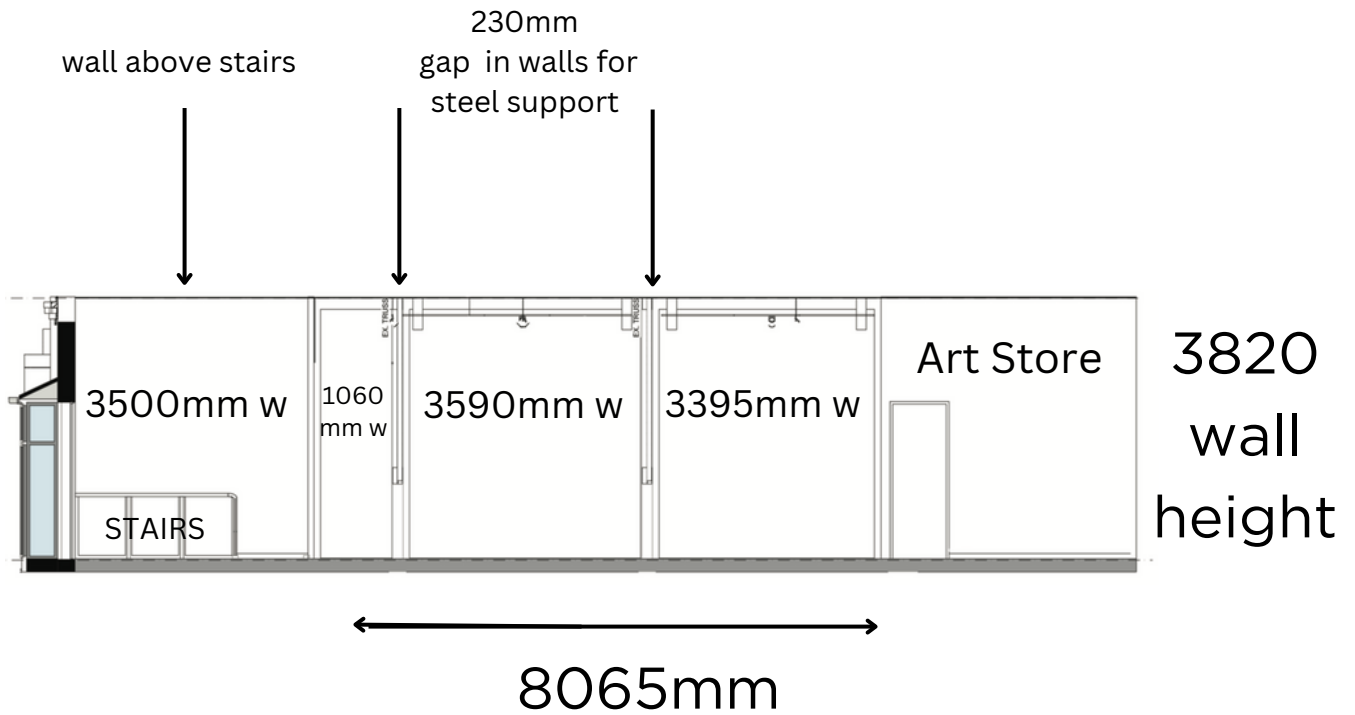
2460mm

2965mm

1850mm

2520mm window

2600mm window

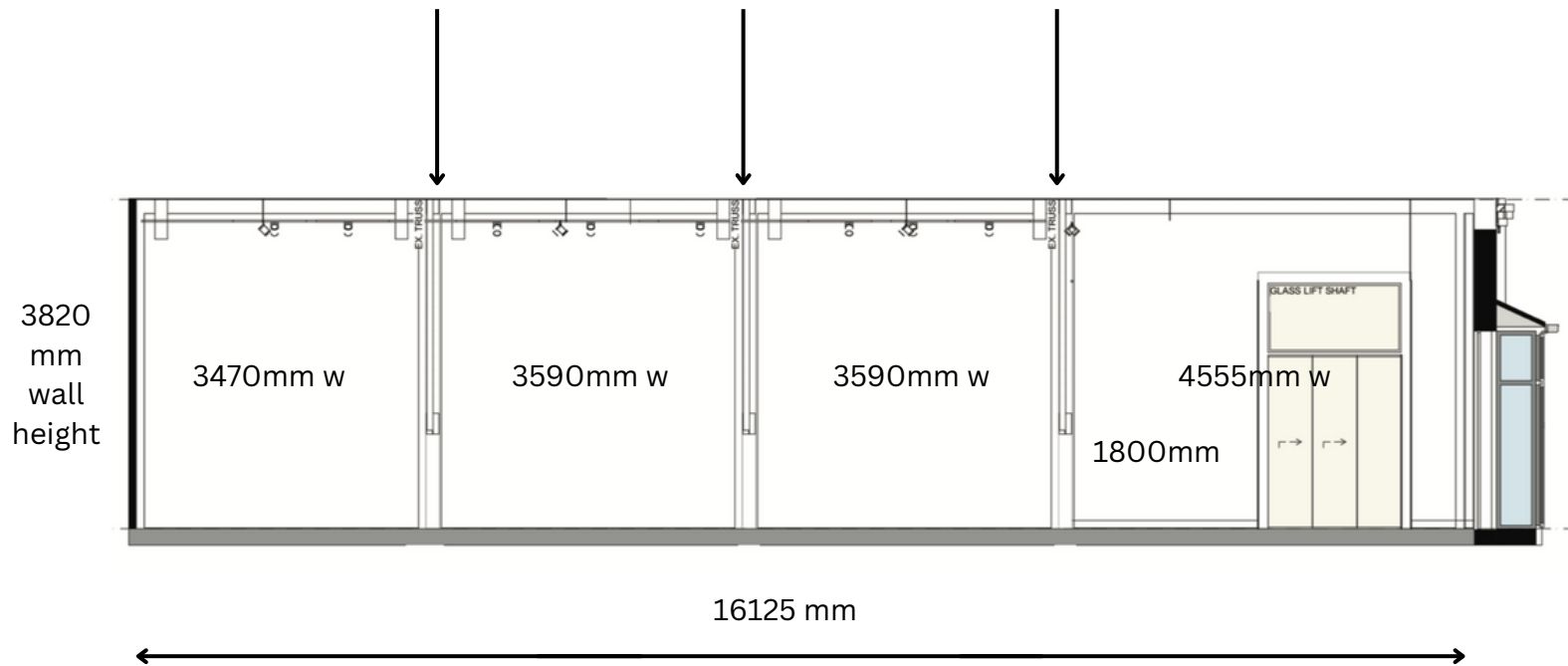


North profile of gallery
please take note of steel supports
see image below for reference

North profile of gallery with movable wall attached



225mm gap for steel building supports



South Profile of Gallery



Gallery Walls

The walls of the gallery are plaster board over 19mm plywood boxed out 150mm from original building.

The **three modular walls** are 15 mm medium density fibreboard (MDF).

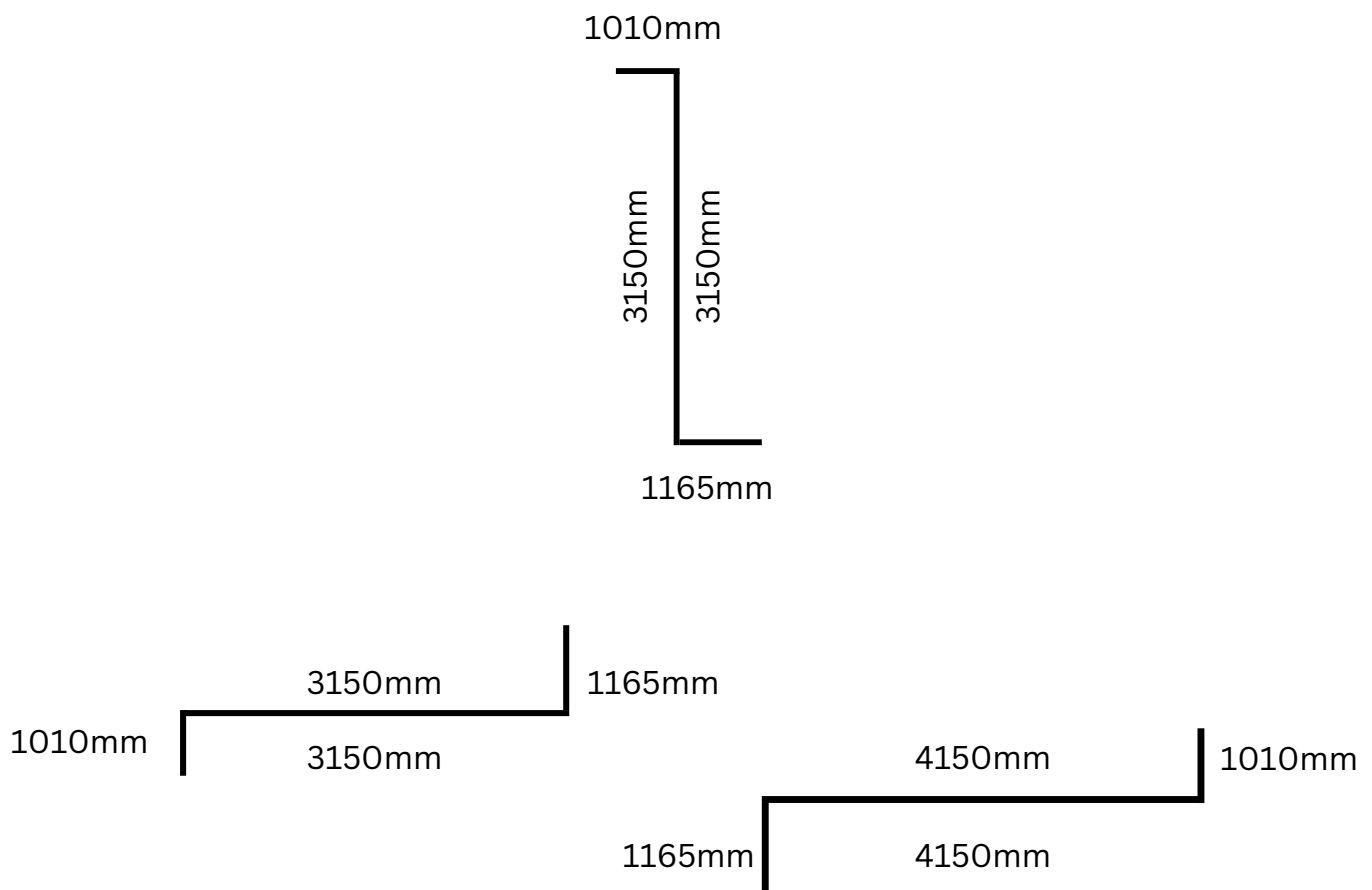
2x 3.15m double sided

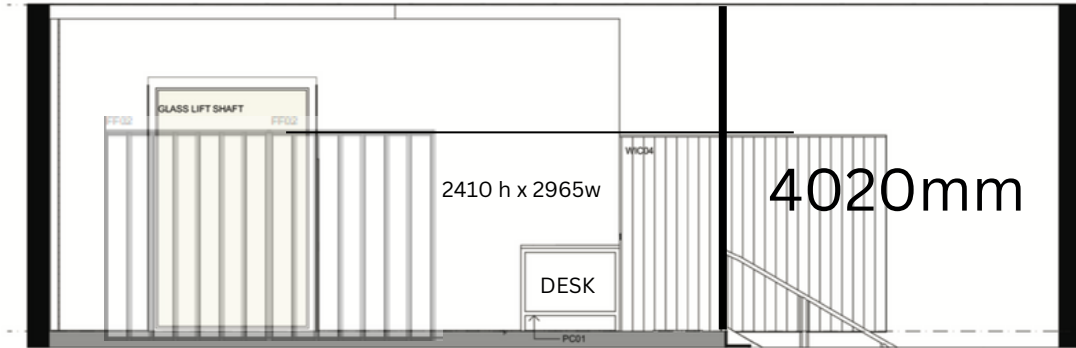
1 x 4.15m double sided

Adding an extra 17.5 running metres

The 110mm panel acts as a support wall that anchors the whole removable wall against a fixed wall.

three removable walls





11860 mm w





2410 h x 2965w

Media Room

← 4050mm →

TV 65" LG G2

3840mm

3950 mm

Sound system is LG 295QR 9.1.5
Channel 810W Dolby Atmos Wi-fi.

Data and power are accessible on all walls
and ceiling throughout the exhibition
space - see floor plan for locations.

Click on underlined text for link to specs
and more information

Lighting Specs

dimnable Dali ballast - Spot Optic (high, medium and low) are located through out the exhibition space and media room.

LUX levels have not been professionally measured. Average measurements with Lux Light Meter Pro is 100 LUX. With lights on high 240, medium 130 , low <50.

Track Spot Light - Palco 86

Palco

Design Artec3
Studio

iGuzzini

Last information update: November 2022

Product configuration: Q671

Q671: body Ø86 mm - Neutral White - dimmable DALI ballast - spot optic



Product code

Q671: body Ø86 mm - Neutral White - dimmable DALI ballast - spot optic

Technical description

Adjustable spotlight with adapter for installation on a mains voltage track. Luminaire made of die-cast aluminium. Spotlight double adjustability allows a 360° rotation about the vertical axis and 90° tilting relative to the horizontal plane. Mechanical aiming locks both for rotation about the vertical axis and tilting relative to the horizontal plane. Optical assembly made up of Neutral White 4000K high colour rendering C.o.B LEDs, with OPTI BEAM REFLECTOR technology and a well-defined spot light beam. Dimmable DALI driver built-in to box with a semi-hidden system on track.

Installation

On a three-phase/DALI electrified track

Colour

White (01) | Black (04)

Weight (Kg)

0.9




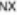
Mounting

three circuit track pendant

Wiring

Product complete with DALI dimmable components, housed in a semi-hidden box on the track.

Sistemi di controllo compatibili:

Quick BLE - Bluetooth Low Energy 
 Quick DALI Touch display 7" 
 Quick DALI LMS Quick 
 Master Pro Evo KNX Konnex 

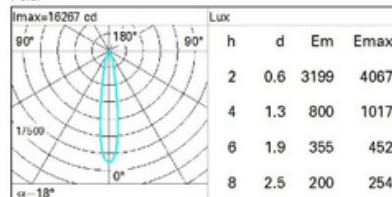
Complies with EN60598-1 and pertinent regulations



Technical data

Im system:	2379	MacAdam Step:	2
W system:	24.3	Life Time LED 1:	> 50,000h - L90 - B10 (Ta 25°C)
Im source:	3050	Ballast losses [W]:	4.3
W source:	20	Lamp code:	LED
Luminous efficiency (lm/W, real value):	97.9	Number of lamps for optical assembly:	1
Im in emergency mode:	-	ZVEI Code:	LED
Total light flux at or above an angle of 90° [Lm]:	0	Number of optical assemblies:	1
Light Output Ratio (L.O.R.) [%]:	78	Power factor:	See installation instructions
Beam angle [°]:	18°	Overvoltage protection:	2kV Common mode & 1kV Differential mode
CRI (minimum):	80	Dimming mode:	CCR
Colour temperature [K]:	4000	Control:	DALI

Polar





Projector Specs

Panasonic PT-MZ880B 8000 Lumen
WUXGA Projector – B, Panasonic ET-ELW22
Zoom Lens for Short Throw

The projector can be installed in multiple
locations

Makers Space

The PACC Makers Space is purpose built for activities and programs such as art classes and creative workshops:

It contains 2x movable benches 2400mm L x 1200mm W x 1000mm H

Stainless steel topped storage cupboards approximately 900mm high along the west wall approximately 6000mm long 450mm depth

2 x stainless steel sinks with trap for paint, clay and materials heavier than water.

Capacity: Approximately 14 plus one facilitator



History of the Site

Performance Arts Culture Cessnock (PACC) is the result of the adaptive re-use of two existing buildings on the corner of Aberdare Road and Vincent Street Cessnock. The entire complex totals some 2,000sqm and has been designed using contemporary materials and finishes that subtly contrast with the older buildings.

The older section of the complex which houses our Exhibition space and Makers Space, holds local and social significance.

Originally built by Morris Light, these buildings were constructed as open plan modern furniture display showrooms. Morris Light was at one time the Lord Mayor of Newcastle and was instrumental in raising funds for the Newcastle City Town Hall and Civic Theatre.

His Cessnock building was a similar design to his earlier Newcastle showroom in Hunter Street, and was believed to be the first steel framed building in the area. It later became the Grace Brothers store in Cessnock. It is quite significant that Morris Light's Cessnock showroom is now an integral part of Performance Arts Culture Cessnock.

The original pressed metal ceilings, steel frames and tallowwood floors have been kept internally.



Lights / Grace Bros. building on Vincent St, Cessnock, now incorporated into the current Cessnock Performing Arts Centre building. Photograph was taken by the late Percy Stembeck, whose collection was donated by his family to the Coalfields Heritage Group, based at the Sir Edgeworth David Memorial Museum at Kurri Kurri.



198 -202 Vincent Street
Cessnock, NSW 2325, Australia



Phone: 02 4993 4266
Email: pacc@cessnock.nsw.gov.au

<https://www.mypacc.com.au/Home>