



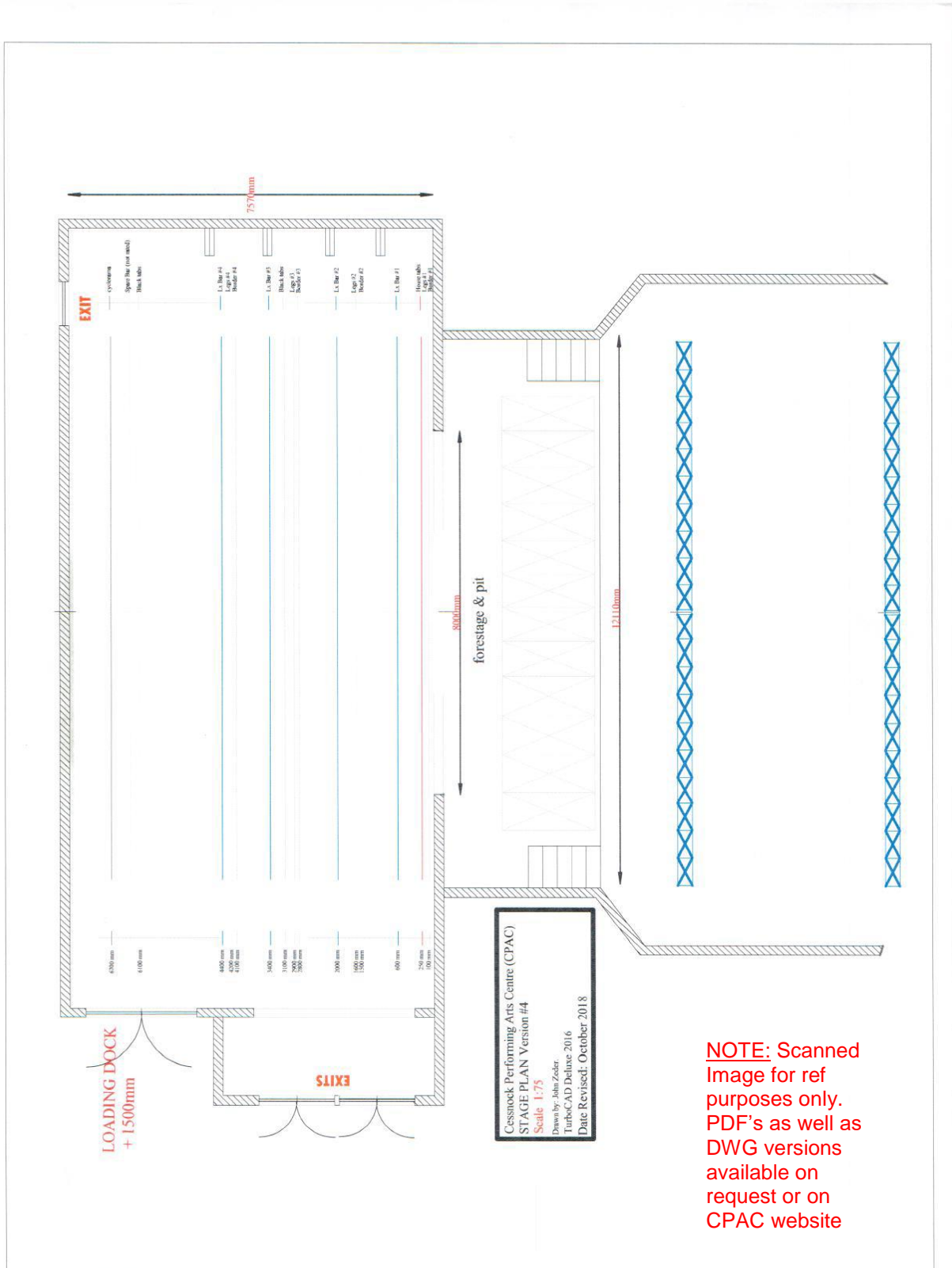
Updated 31/01/2023

VERSION # 12

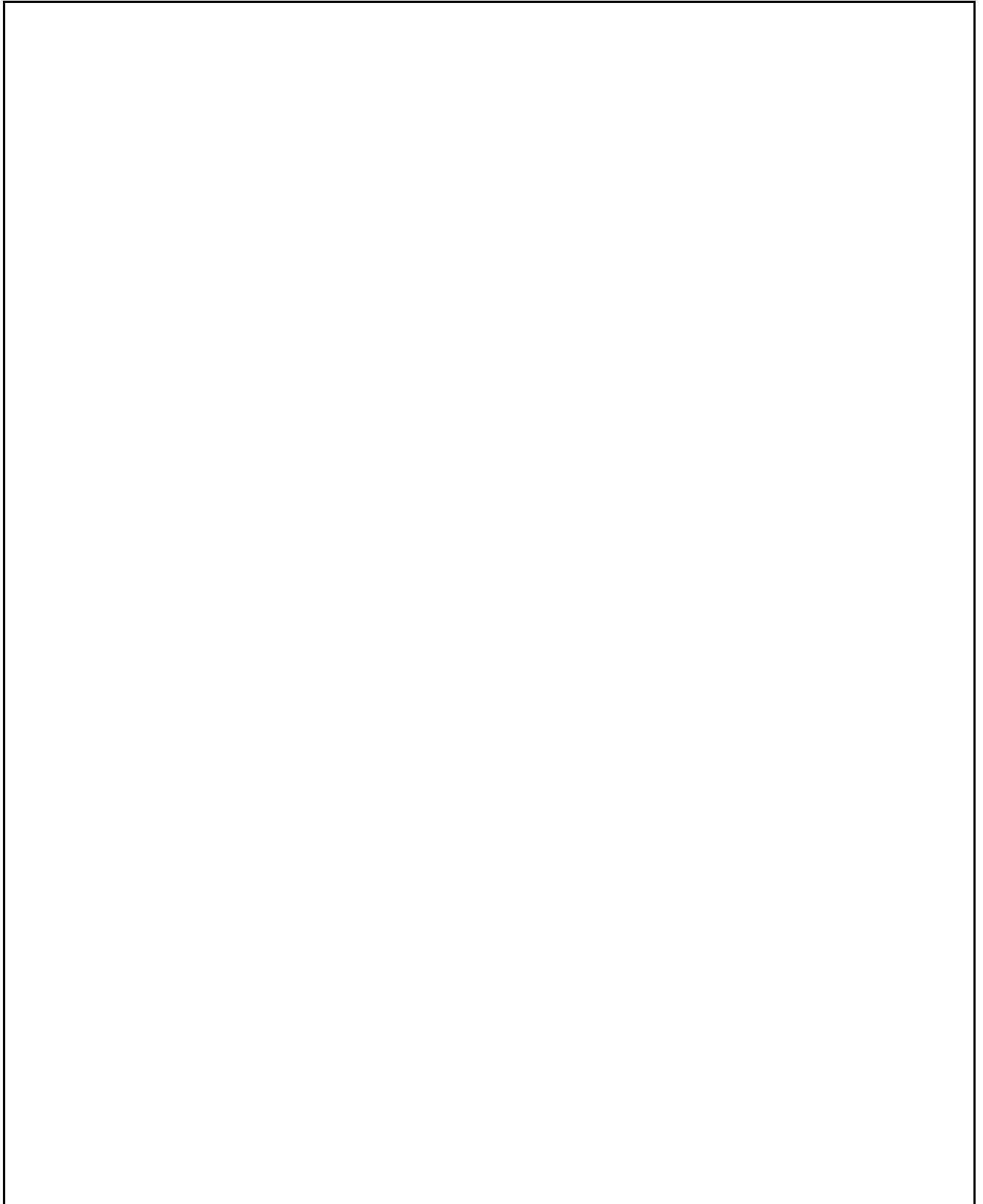
Technical Specification Information:	Page
Contents	1
Stage Plan (Not to scale)	2
Stage Plan Side Elevation (Not to scale)	3
Seating Plan / Capacity	4
Stage Info: Dimensions / Load in Facilities / Accessories	5 - 7
Heights Access Equipment:	8
Stage Hanging Plot	9
Lighting Trusses / Rigging	10
Power / Dimmers / Lighting Control Desk / Equipment	11 - 12
Standard Lighting Plot / Rig	13
Audio: Sound Desk / Equipment	14 - 16
Talkback / Piano	16
Stage Manager/ Prompt Corner	17
Performer's Facilities/ Dressing Rooms/ Laundry	17
Conference and Meeting Room Facilities	17 - 18
Audio Visual Equipment / Wi-Fi and web links	18 - 19
Disclaimer	19

VENUE TECHNICAL SPECS VERSION #1 - 2023

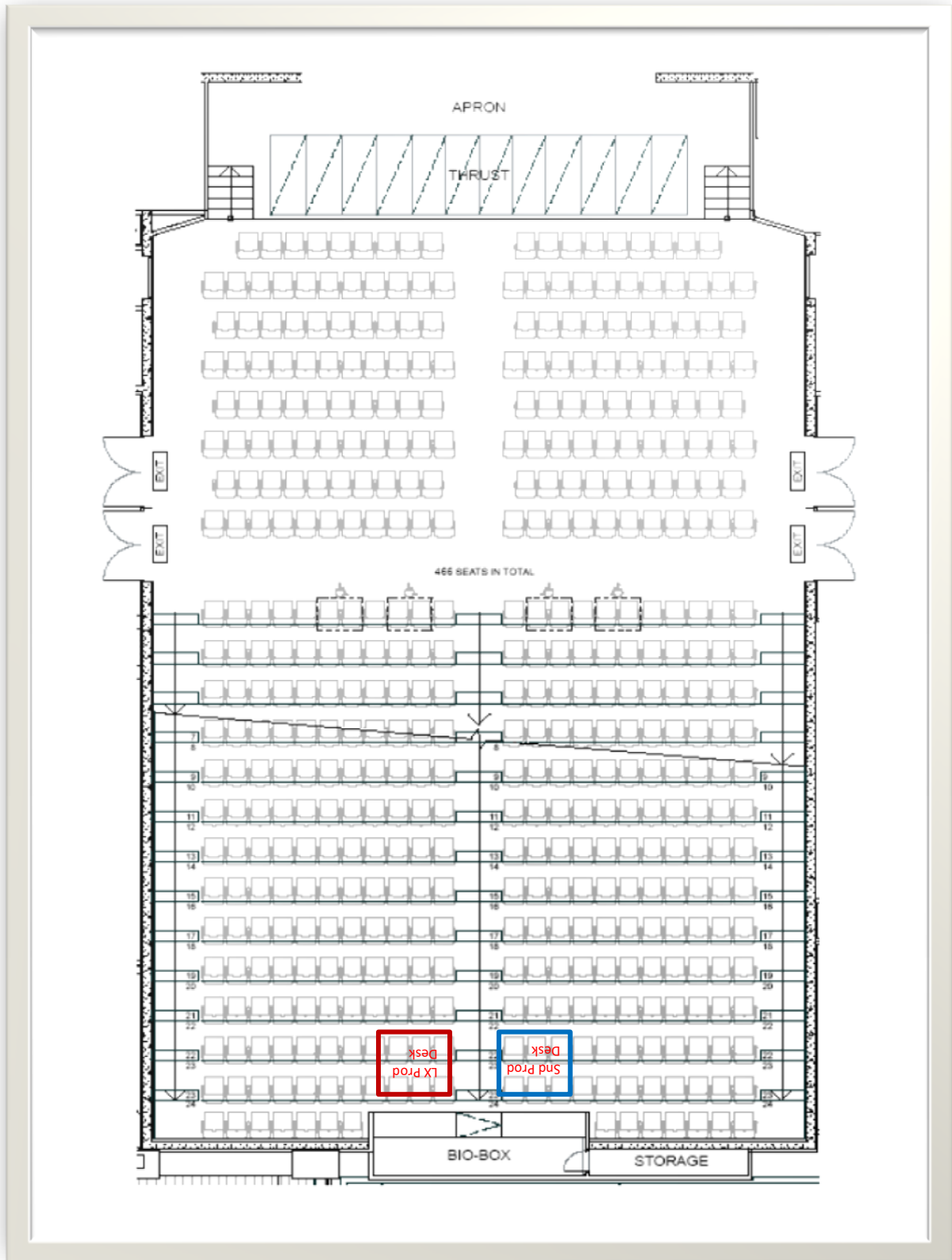
STAGE PLAN:



STAGE SIDE ELEVATION:



THEATRE SEATING PLAN: Includes touring production desk positions at rear of auditorium



VENUE TECHNICAL SPECS VERSION #1 - 2023

STAGE INFORMATION:

- The CPAC Theatre is a non-fly tower venue. The fly system is a combination of dead hung masking plus four (4) onstage lighting bars raised and lowered on motorised winches.
- The masking is comprised of four (4) sets of flat black wool legs and four (4) flat black borders.
- The stage has the following Flown and Masking Items:
 - A traveller (French Action) House curtain,
 - A mid stage traveller (French Action) flat black Tabs,
 - An upstage traveller (French Action) flat black Tabs
 - And a white cyc.
- The Stage is a flat sprung floor. The surface is Masonite - painted flat black
- There is no safety curtain.

There is a small Orchestra pit which if required must have the Thrust Stage pieces removed. !!

- Stairs both Prompt and O. Prompt provide access from the Stage to the Auditorium.
- Wheelchair lift from the Stalls to the Stage level is located in Prompt Side. (Accessed from Internal Street).

Stage Dimensions:

Proscenium Opening:	Height	5000 mm
	Width	8000 mm

Setting Line:	Upstage of Proscenium Wall	0000 mm
----------------------	----------------------------	---------

Stage Area Upstage of Curtain / Setting Line

Maximum Width DS (wall-to-wall)	19000 mm
Maximum Width US (wall-to-wall)	17000 mm
Maximum Depth to back wall	7600 mm
Maximum Depth to Cyc	6700 mm

Stage Area Downstage of Curtain / Setting Line

Apron Width: <i>Side wall to side wall</i>	12100 mm
Apron Depth: <i>from Pros - Steps</i>	1730 mm

Thrust Width: <i>Side of steps to side of steps.</i>	10300 mm
Thrust Depth: <i>From steps to front of stage.</i>	1510 mm

Overall forestage Depth:	3240mm
---------------------------------	--------

!! Denotes Additional Charges apply

VENUE TECHNICAL SPECS VERSION #1 - 2023

STAGE INFORMATION (cont.)

PS & OP Stairs/treads width:	with 50mm railing	800mm
	Without 50mm railing	900mm

- Stage stairs in-fills are available for both sides and can be inserted upon request.

Stage Heights:	Stage Floor to Auditorium floor	1100 mm
	Stage Floor to underside of roof trusses	7350 mm
	Stage Floor to Orchestra Pit (depth)	2200 mm

Stage Surface:	Flat plywood floor on timber rafters	
	Finish is Tempered Masonite painted flat black	
	Maximum stage loading	Distributed 5.0 KPA Concentrated / point load 3.6 KPA

Thrust Surface:	Flat plywood floor on timber rafters	
	Finish is Tempered Masonite painted flat black	
	Maximum stage loading	Distributed 5.0 KPA Concentrated / point load 3.6 KPA

Orchestra Pit:	Maximum Width	9900 mm
	Maximum Depth	3050 mm
	Pit floor to underside of apron	2370 mm

Access from Stage (DS / O. Prompt)

Stage / Loading Door: Located off Car Park (entry point from Cumberland St)

Loading Door height from street	1600 mm
Maximum door access Height	3000 mm
Maximum door access Width	2300 mm

****NOTE!** The loading dock floor is a floating concrete slab suspended over a running creek and therefore has a Max load limit of 10 tons. Please advise CPAC in advance, if your truckload exceeds limit.

Loading dock Floating: Length from firm section to loading dock doors	7400mm
Width at narrowest point	3250mm.

On-Stage Trusses

On Stage Soft Goods Trusses: Dead hung using rated hardware / chain / beam clamps

12000mm Global F32 Aluminium Flat truss (300mm)
Max distribution is 350 kg per truss.
WLL 30kg / metre
Max point load 30 kg

VENUE TECHNICAL SPECS VERSION #1 - 2023

STAGE INFORMATION (Cont.)

On Stage Soft-Goods

Soft Goods / Drapes:

Main Curtain	red 100% fullness	5500 mm high x 12000 mm wide
Borders	flat black wool	2000 mm high x 13000 mm wide
Legs	flat black wool	6000 mm high x 2000 mm wide
Mid Stage traveller	flat black wool	6300 mm high x 13000 mm wide
Up Stage traveller	flat black wool	6300 mm high x 13000 mm wide
Cyc	white	6300 mm high x 13000 mm wide

Staging Accessories Equipment:

Rostrums/ risers:

Folding Rostrums	8 x (L) 1200 mm x (W) 1000 mm x (H) 500mm with 15mm Ply Tops
Folding Rostrums	2 x (L) 1200 mm x (W) 900 mm x (H) 500mm with 15mm Ply Tops
Folding Rostrums	6 x (L) 2400 mm x (W) 1200 mm x (H) 300mm with 15mm Ply Tops Can be adjusted to 600 mm Heights.
Choir Risers	2 x (L) 2000 mm x (W) 380 mm x (H) 80mm Solid wood veneer.
Treads/steps:	2 x (L) 600 mm x (W) 300 mm x (H) 200mm single step
	2 x (L) 900 mm x (W) 710 mm x (H) 300mm (two steps)
	2 x (L) 900 mm x (W) 710 mm x (H) 450mm (three steps)

Assorted:	Drum Carpets
	Carpet runners.
	Black material (Tat)
	14 x Shot Bags.
	2 x Mobile clothes racks:
	3 x Full length mirrors and assorted make-up mirrors

VENUE TECHNICAL SPECS VERSION #1 - 2023

HEIGHTS ACCESS EQUIPMENT:

EWP: Genie AWP 25S. Max work height = 9 Mtrs

EWP Use conditions:

- Operator must be inducted in its use.
- Operators must undertake the pre op checks and
- Fill in the log book.
- Outriggers must be used when in operation and one staff member must be located at the base at all times whilst in use.

Ladders:
1 x Branach fibreglass step platform 1.8 meters (platform height)
1 x Branach fibreglass step platform 3.6 meters (platform height)
1 x Gorilla 1.8 Fibre glass "A" frame ladder.

VENUE TECHNICAL SPECS VERSION #1 - 2023

PACC Standard Hanging Plot / Rig

Soft Goods / Masking	Distance From Set Line	Trim above Stage	Notes
Black Border #1	0000mm	4800mm	Flat black wool / piped bottom
Black Legs #1	100mm	3950mm from C/L	Flat black wool
House Curtain	250mm		Traveller operated Prompt
L.x. #1	600mm	5500mm	Motorised Winch operated flat truss
Black Border #2	1500mm	4800mm	Flat black wool / piped bottom
Black Legs #2	1600mm	3900mm from C/L	Flat black wool
L.x. #2	2000mm	5500mm	Motorised Winch operated flat truss
Black Border #3	2800mm	4800mm	Flat black wool / piped bottom
Black Legs #3	2900mm	3900mm from C/L	Flat black wool
Black Tabs / Curtain	3100mm		Traveller operated Prompt
L.x. #3	3400mm	5500mm	Motorised Winch operated flat truss
Black Border #4	4100mm	4800mm	Flat black wool / piped bottom
Black Legs #4	4200mm	3900mm from C/L	Flat black wool
L.x. #4	4400mm	6000mm	Motorised Winch operated flat truss
Black Tabs / Curtain	6100mm		Traveller operated Prompt
Cyc	6700mm		White cloth

VENUE TECHNICAL SPECS VERSION #1 - 2023

LIGHTING:

TRUSSES / RIGGING

FOH Lighting Truss #1 / #2

12000mm Prolyte H40V Aluminium Box truss (400mm x 400mm)
Max distribution is 1200kgs per truss.
WLL 119kg / metre
Max point load 653 kg
Raised and lowered by 2 x 'GIS' LP 500D8+ 500kg 'chain motors

Note: Chain Motors Remote Control Operated by authorized personnel only!

On Stage Lighting Truss #1 / #2 / #3 / #4

12000mm Global F32 Aluminium Flat truss (300mm)
Max distribution is 500 kg per truss.
WLL 35kg / metre
Max point load 150 kg
Raised and lowered by 'SSE' PW-500 Motorised Pile-wind Hoists.

Note: only authorized personnel to operate Winches!

Distances from front of stage: FOH Truss #1: 1700mm

FOH Truss #2: 6270mm

For on-Stage LX Bars, refer to Standard Hanging Plot.

NOTE: Access to FOH Trusses is awkward, requiring the displacement of several seat rows to locate ladder into position to focus lanterns. This exercise is time consuming and requires 2 staff members to undertake properly and safely. Truss FOH 1 is in a fixed position for a f

ull stage wash, while our FOH 2 holds projection and specials. Clients are encouraged to consider this when scheduling rigging, focus and plotting sessions in this venue. **!!**

Same applies to rig restore. Additional staffing charges may apply depending on the complexity of changes made to both FOH trusses. **!!**

!! Denotes Additional Charges apply

VENUE TECHNICAL SPECS VERSION #1 - 2023

POWER / DIMMERS

Power Supply FOH:

FOH Stage lighting dimmers	3 x 32-amp 3 phase 5 pin Wilco
House Light dimmers	1 x 32-amp 3 phase 5 pin Wilco
Chain Motor power	1 x 32-amp 3 phase 5 pin Wilco
Additional power	2 x 32-amp 3 phase 5 pin Wilco

Power Supply Stage:

Stage Dimmers	8 x 32-amp 3 phase 5 pin Wilco
---------------	--------------------------------

Road Power Hook Up:

Road Power / Outdoor Stage	1 x 32- amp 3 phase 5 pin Wilco
	1 x 40-amp 3 phase 5 pin Wilco

Lighting Control Desk / Equipment

CPAC currently employs a Pathport network system facilitating distribution of multiple universes to a variety of locations around the stage and auditorium.

Light Control Desk:

ETC Ion Control Desk + 2 x 20 Fader Wing
1,024 outputs (2 x DMX Universes)

FOH Dimmers:

Bytecraft Solution 12

36 x 2.5amp dimmers (RCD protected per circuit)
Hard Patch Outlets at Dimmer / 2 sockets per dimmer. (All with Bypass Switching)

On Stage Dimmers:

Bytecraft Solution 12

96 x 2.5amp dimmers (RCD protected per circuit)
Hard Patch Outlets at Dimmer / 2 sockets per dimmer. (All with Bypass Switching)

LANTERN STOCK:

(FOH Trusses):

FOH Lx 1: 12 x Prolights EclProfile CT+ 15° - 30°

2 x Clay paky Mini b

2 x Selecon "Pacific" 14-35° 1000 w Profiles

FOH Lx 2: 15 x Selecon "Pacific" 14-35° 1000 w Profiles

VENUE TECHNICAL SPECS VERSION #1 - 2023

(Stage Trusses):	10 x Selecon "Pacific" 14-35° 1000 w Profiles 7 x Selecon "Rama" 1000 w Fresnels 15 x Event 12x12 Hex ProPars 5 x Infinity TCYC-7 LED CYC units 6 x ProLight EclProfile CT+ 15° / 30° 7 x Clay Paky MiniB
Gobos:	Selecon "Pacific" Profiles Take "B" size. Holders x 15 EclProfile Gobo Holder x 10
Iris:	Selecon "Pacific" Profiles x 5 EclProfile iris x 10
Follow Spot:	1 x Selecon "Rua" 1200 w !!

Note: All lamps complete with 150kg fast coupler / globe / frames / barn doors / shutters.

Extra equipment or cabling brought into the theatre must be tested, tagged and current.

HOUSE LIGHTS

House Lighting is independent from the stage lighting system. It consists of 18 x BL100-WW-II-D50 Tungsten LED Pars controlled by Cueserver 2 Mini processor and DMX fade engine system.

Note: It is possible to set up house lights control via the Lighting desk upon request.

House Lights Pre-sets: 'Mystique' Wall stations: 8 pre-set panel @ Prompt corner &
8 pre-set panel @ Bio Box.

STANDARD RIG

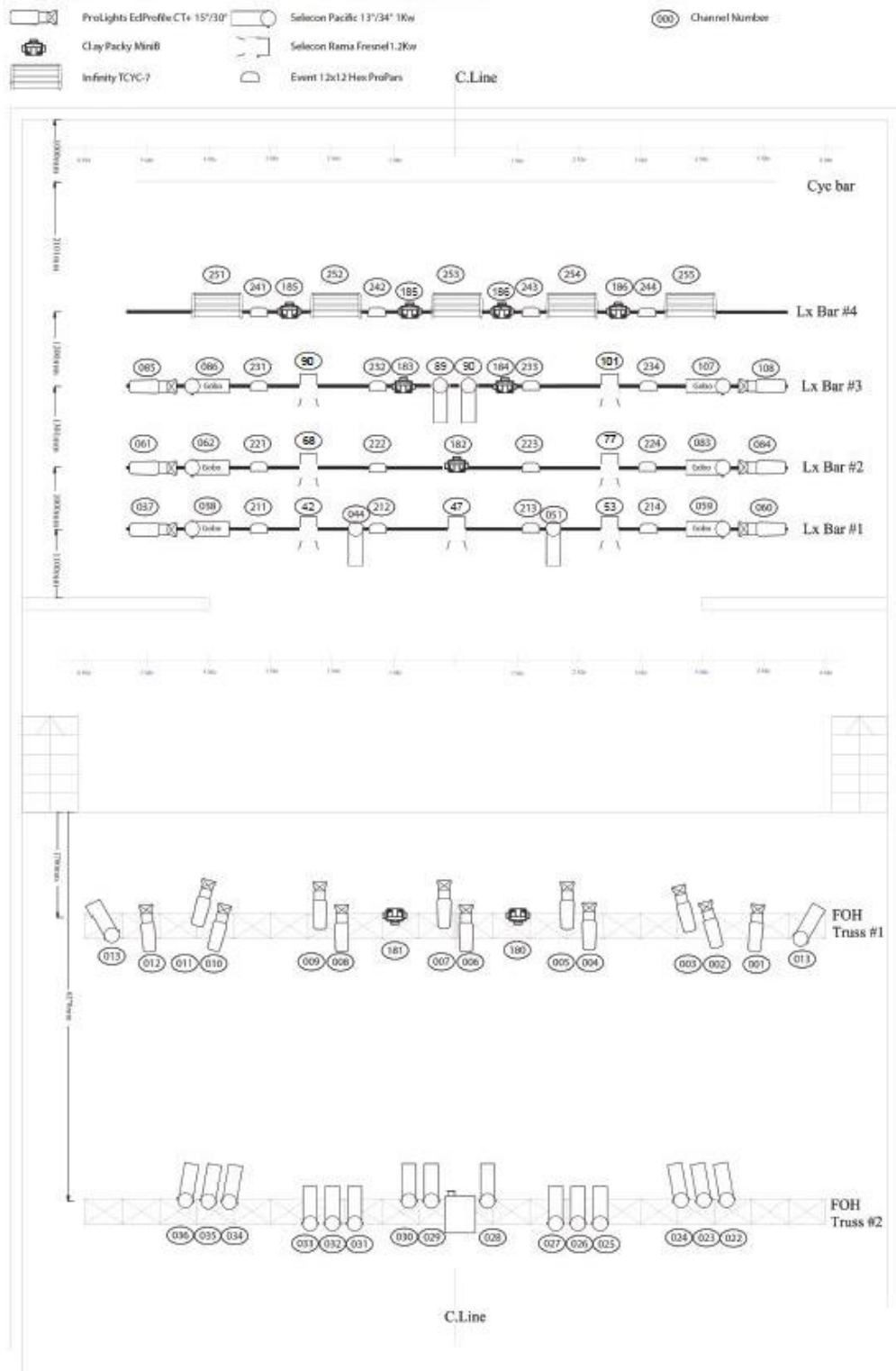
Standard Rig patching: Standard rig information and patch sheets is available on website.

!! Denotes Additional Charges apply

VENUE TECHNICAL SPECS VERSION #1 - 2023

Standard Lighting Rig: Revised draft #1

NOTE: A PDF version of plan is available in PACC website.



VENUE TECHNICAL SPECS VERSION #1 - 2023

AUDIO:

CONSOLES / EQUIPMENT

Bio Box Mixing Equipment:	1 x Allen & Heath GLD-80 -32 in/16 out (Digital Mixing console)
	1 x Allen & Heath GL2400-32 Chanel (Analog Mixing console)
CD Players:	1 x Denon DN-625
System Processor:	1 x Meyer Sound Galileo processor

SPEAKERS

(FOH):	2 x Meyer CQ 1 (Prompt / O. Prompt Pros. Arch) 2 x Meyer UPJ -1P (Prompt / O. Prompt Pros. Arch)
(On Stage Flown Fold back):	2 x Proel "Flash 12A" Active speakers: 12" @ 200W.

Multi-core and Patching: **Digital patch:** Terminated at both DSP & OP

1 x GLD Audio Rack 24/12 – DS/OP
1 x GLD Audio Rack 8/4 – DSP

Analog patch: Terminates in DS/OP.

32 x XLR Microphone lines to Bio-Box
4 x XLR Returns from Bio-Box
8 x XLR Tie-lines from Orchestra Pit
8 x XLR Tie-lines from DS. Prompt

OTHER AUDIO EQUIPMENT: NOTE: !! Denotes Additional Charges apply

Microphones:	3 x Shure BETA 58A mics !! 7 x Shure SM58 mics 3 x Shure SM57 mics 2 x Crown PCC- 160 floor boundary mics. !! 3 x Superlux PRA 52B Choir mics. 2 x Sennheiser e906 mics 2 x DPA 4066 Headset units. !!
---------------------	--

AUDIO: Contd.

Drum Microphones:	1 x Heil HDK-7 Drum Mic Kit !! Consisting of:
--------------------------	--

Page 14 of 19

VENUE TECHNICAL SPECS VERSION #1 - 2023

2 x PR22
3 x PR28
2 x PR30B +
1 x Shure beta 52A Kick Drum mic.

Radio Microphones:	4 x SENNHEISER EW100 G3 Receivers + EW 945 Hand-held radio microphones. !! & SENNHEISER SK100 Body packs with SENNHEISER ME3, headset mics.
Lectern Mics:	3 x Earthworks MSR500 /600 Condenser Microphones.
Microphone Stands:	13 x Beyer-dynamic GST400 Boom mic stands 3 x Round Base upright stands (black stems) 3 x Round Base upright stands (Chrome stems) 1 x short Boom stands Tripod base, 3 x short Boom stands Round Base. 3 x Heil Drum Mount Clips
DI Boxes:	4 x L.A. Audio DI-2 mark #3 3 x DB-01 Passive DI boxes 3 x Radial JDI passive DI's 1 x Radial JDI Duplex Passive Stereo DI
Mobile CD player	1 x Yamaha CDX397 (CD player)
Microphone Cabling	11 x 3 Mtr Mic cables XLR/M – XLR/F 22 x 5 Mtr Mic cables XLR/M – XLR/F 31 x 10 Mtr Mic cables XLR/M – XLR/F 15 x 20 Mtr Mic cables XLR/M – XLR/F 1 x 15 Mtr Multicore Loom 12 Sends / 4 rtn 3 x 15 Mtr Multicore Loom 4-way 1 x 25 Mtr 4-way Multicore Loom on drum. Assorted Jack – Jack & Jack – XLR M/F cables
Fold Back Wedges:	2 x JBL EON10G2 3 x Meyer UPJ –1P 5 x Quest QM450a's Powered wedges 1 x Quest QM600ASi Sub

AUDIO: Contd.

Portable System: !!	1 x Spirit Mixing Console 2 x JBL EON10G2 2 x Speaker Stand
----------------------------	---

VENUE TECHNICAL SPECS VERSION #1 - 2023

1 x Microphone Stand
2 x CD Player
1 x Shure SM58 Microphone

Miscellaneous Equipment: 1 x Yamaha MG16/6FX (Mixing console)
1 x dbx 2231 dual 1/3 Octave EQ with limit
1 x Lexicon MPX1 - 2-in/2-out Multi Effects Processor
1 x Denon DN-625

TALKBACK Comms / PIANOS.

Talkback Systems: Wired: 1 x Ezicom 200 Master Station (in Bio Box).
5 x Ezicom 100 belt-packs
6 x Beyer-dynamic DT-109 Headset
Patches in Bio, Prompt and O.P. Wings,

Wireless: 1 x BTR-80N-B2 UHF 2 Ch. Wireless Base Station.
4 x TR-80N-B2 UHF 2 Ch. Wireless Transceivers
4 x HR single sided Headsets

PIANOS:

On Stage: Make: Bechstein Concert Grand
Model: E.

Foyer/Auditorium: Make: Petrof
Model: Baby Grand

Note: Pianos tuned to A440 Concert pitch. Unless otherwise specified.

NOTE: There are additional charges for piano tuning: !!

!! Denotes Additional Charges apply

STAGE MANAGER / DRESSING ROOMS / MISCELLANEOUS:

Stage Manager Console: Prompt Corner (Positioned in Prompt Wing)

Talkback out-station. Extension leads (on Request)
Flat screen Stage monitors (CCTV)
Dressing Room/Auditorium/Foyer paging
House Light Control: Wall Panel with 8 pre-set settings.

PERFORMER'S FACILITIES.

Dressing Room # 1:

Seats approx. 8 – 10 persons
Mirrors / counter / sink / costume racks
Program sound / paging / flat screen CCTV Stage monitor
Toilets / shower

Dressing Room # 2:

Seats approx. 8 - 10 persons
Mirrors / counter / sink / costume racks
Program sound / paging / flat screen CCTV Stage monitor
Toilets / shower

Disabled Toilet:

Male / Female toilet
Adjacent to Dressing Rooms

Green Room:

Adjacent to Dressing Rooms
Small coffee/Tea making kitchen facility.
Refrigerator / sink / microwave
Program sound / paging / flat screen CCTV Stage monitor

Laundry facilities:

Outside dressing rooms:

1 x Whirlpool 8.5 Kg front end load washing machine
1 x Westinghouse dryer
1 x ironing board
2 x Irons (1 per dressing room)

VENUE TECHNICAL SPECS VERSION #1 - 2023

CONFERENCE AND MEETING ROOM FACILITIES.

NOTE: !! Denotes Additional Charges apply

Ground Floor:

Seniors Room: 9 Mtrs x 11 Mtrs

Adjacent to Dressing Rooms
Has its own small kitchen facilities
Refrigerator / sink / microwave

1st Floor:

Program Room: 9 Mtrs x 11 Mtrs

Above Seniors Room
Large open space suitable for rehearsals and conferences.
Adjacent Male & Female toilets
Small adjacent coffee/Tea making kitchen facility.
Fitted with 1 x Hitachi CP-WU5500, DLP5200 lumens Projector. !!
3000 x 3000 Projection screen.
Small PA system for Audio feed from Laptop.

Small Meeting Room: 7 Mtrs x 5 Mtrs

Adjacent to Program Room
Adjacent Male & Female toilets
Small adjacent coffee/Tea making kitchen facility.
Projectors available for this room. !!
Portable 1800 x 1800 Projection screen.

AUDIO VISUAL.

NOTE: !! Denotes Additional Charges apply

Data Projectors:	1 x Panasonic: PT-LB80, LCD. !!	3200ansi
	1 x Hitachi: CP-WU13K, DLP. !! (Permanent fixture on FOH #2 Truss)	13000ansi

VENUE TECHNICAL SPECS VERSION #1 - 2023

AUDIO VISUAL Contd.

Projection Screens: 1 x Draper, Diplomat Tripod Screen 175cm x 234cm (6' x 7')
1 x Draper Universal: Folding Screen !! 274cm x 366cm (12' x 9')

Draper Universal: Front or Rear Projection Screen options.
Draper Universal: Dress Kit (Black)

1 x HP Elite laptop PC. !!

AV Accessories: 1 x Catlink, VGA to Cat-5 Converter kit
1 x Catlink, HDMI to Cat-5 Converter kit.
1 x Image, Projector stand - adjustable
Assorted VGA/ HDMI/DVI and Cat- 5 Cables

Internet Wi-Fi: Available on request.

CESSNOCK CITY COUNCIL WEB LINKS:

Tech Specs & Standard Rig:

<http://www.cessnockperformingartscentre.com.au/venue-hire/theatre>

DISCLAIMER:

Whilst every effort is made to fulfil hirer requirements from in-house stock; no guarantee is made that the equipment listed will be available for a particular event due to damage or circumstances beyond our control.

This document is correct at time of publishing, but it may not represent the full equipment stock list entirely as the venue upgrades its equipment from time to time in an effort to improve its capabilities or replace outmoded and malfunctioning equipment.